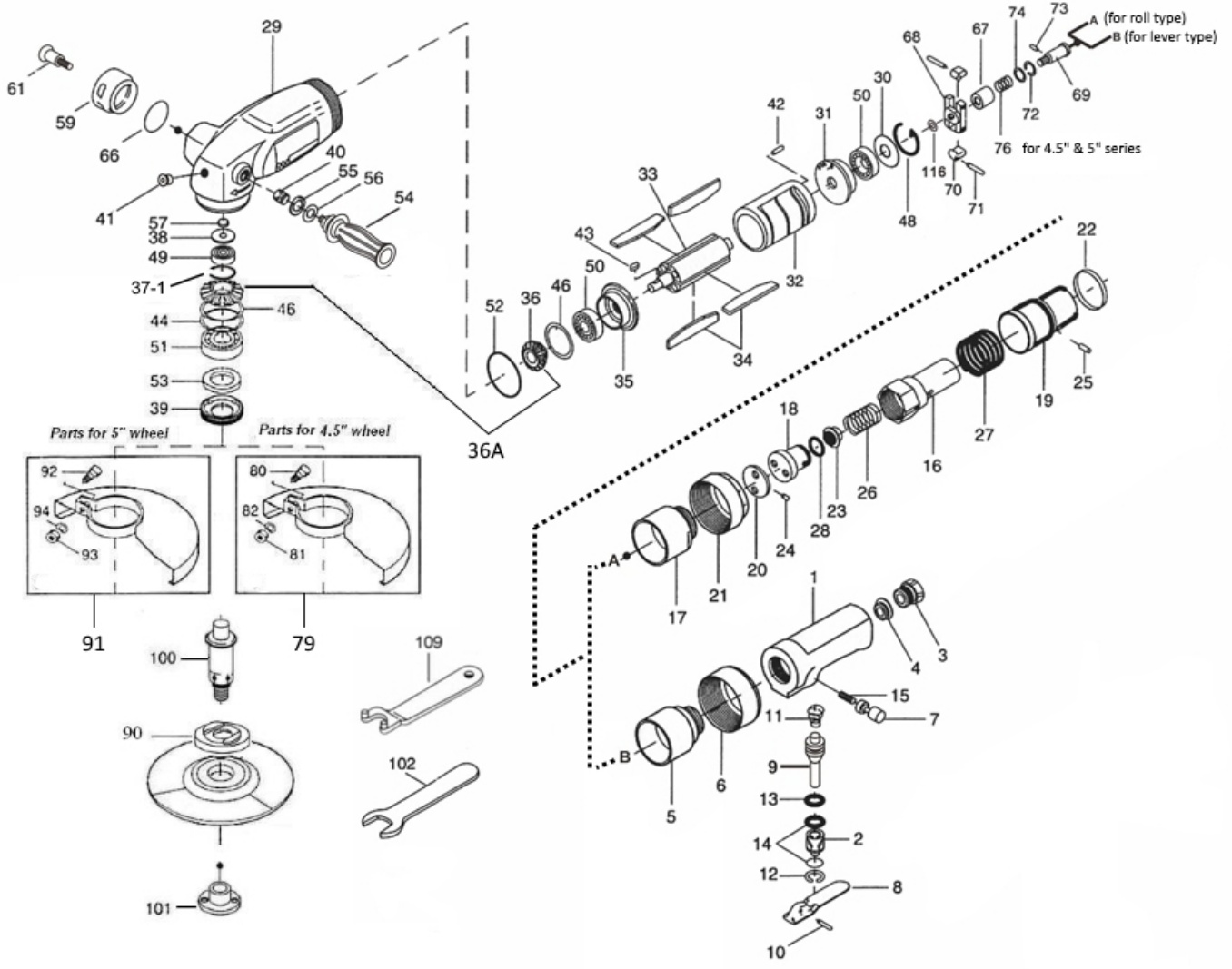




SG4558A(R) & SG558A(R) GOVERNED SANDER / GRINDER

Wespro Power Tools



C#117708 HANDLE ASSEMBLY-ROLL TYPE (A)
C#117577 HANDLE ASSEMBLY-LEVER TYPE (B)



SG4558A(R) & SG558A(R) GOVERNED SANDER / GRINDER

Wespro Power Tools

<u>No.</u>	<u>Description</u>	<u>Order Code</u>	<u>Qty</u>	<u>No.</u>	<u>Description</u>	<u>Order Code</u>	<u>Qty</u>
1	Handle (Lever Type)	113062	1	49	Ball Bearing	112036	1
1A	Handle Assembly (Part #1 ~ #15)	117577	1	50	Ball Bearing	114814	2
2	Valve Bushing	112838	1	51	Ball Bearing	112047	1
3	Air Inlet Bushing	113064	1	52	O-Ring	34713	1
4	Filter	113065	1	53	Felt Ring	34795	1
5	Valve Body Connector	26092	1	54	Dead Handle	113083	1
6	Valve Body Nut	26093	1	55	Flat Washer	32611	1
7	Safety Pin	112840	1	56	Spring Washer	32622	1
8	Valve Lever	113067	1	57	Outer Snap Ring	34180	1
9	Valve Stem c/w #13 O-ring	115373	1	59	Exhaust Stack	266399	1
10	Roll Pin	33158	1	61	Stem Assembly	266400	1
11	Cone Spring	113051	1	66	O-Ring	34703	1
12	Inner Snap Ring	34151	1	67	Governor Valve	113084	1
13	O-Ring	113050	1	68	Governor Cage	113085	1
14	O-Ring	113052	2	69	Governor Spindle	113086	1
15	Spring	112842	1	70	Governor Weight Set	113087	2
16	Handle (Roll Type)	117682	1	71	Roll Pin	33143	2
16A	Handle Assembly (Parts #16 ~ #28)	117708	1	72	Adjusting Spacer	113088	1
22	Band	26089	1	73	Pin (H)	113089	1
29	Casing	113071	1	74	Spacer	113090	1
30	Spacer for Rear End Plate	113072	1	76	Spring (For 4.5" & 5")	33773	1
31	Rear End Plate	113073	1	79	Wheel Guard Assembly (4.5")	278351	1
32	Cylinder	113074	1	80	Hexagon Head Bolt	32210	1
33	Rotor	113075	1	81	Hexagon Nut	32555	1
34	Rotor Blade	136818	4	82	Spring Washer	32620	1
35	Front End Plate	113076	1	90	Wheel Holder Flange 5/8-11	273753	1
36A	Driving (15T) and Driven (18T) Gear Set	266316	1	91	Wheel Guard Assembly (5")	113098	1
37-1	Snap Ring	354536	1	92	Hexagon Head Bolt	32210	1
38	Casing Rear Cover	113079	1	93	Hexagon Nut	32555	1
39	Casing Front Cover	113080	1	94	Spring Washer	32620	1
40	Helico Insert	32662	1	100	Wheel Spindle 5/8-11	273754	1
41	Allen Head Plug	32699	1	101	Wheel Nut Flange 5/8-11	273755	1
	Grease Fitting	266323		102	Spanner	113101	1
42	Roll Pin	33135	1	105	Connecting Screw	32056	1
43	Key	33219	1	109	Spanner- Pin Type	113059	1
44	Adjusting Spacer	33563	1	116	Governor Washer	312521	1
46	Adjusting Spacer	113081	2	*	Rubber Sleeve (for handle)	243553	1
48	Snap Ring	329488	1				

01/05/24

Western Office 604-298-2933 Eastern Office 905-428-1616 www.wespropowertools.com